

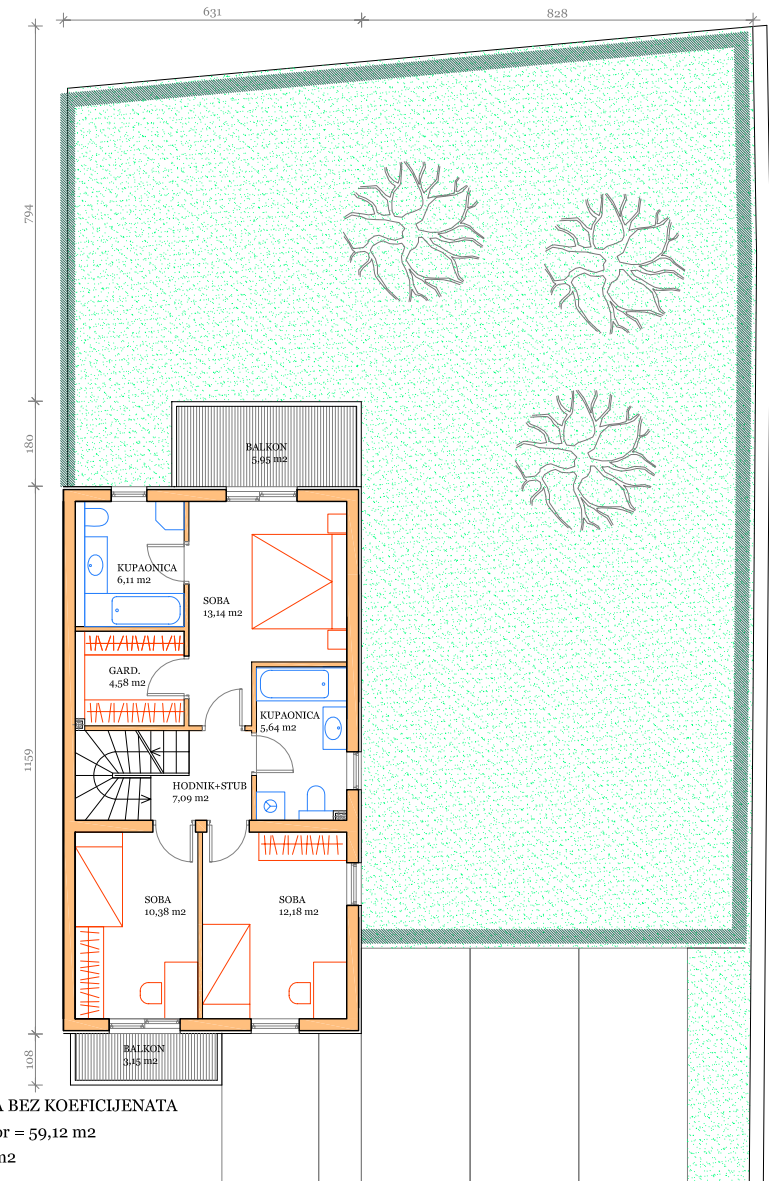
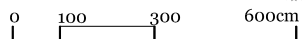
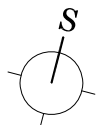
POVRŠINA PRIZEMLJA BEZ KOEFICIJENATA

P zatv. (sa gar.) = 55,80 m²

P terasa = 6,6 m²

P parking = 11,5 m²

P vrt = 205,85 m²



POVRŠINA KATA BEZ KOEFICIJENATA

P zatvoreni prostor = 59,12 m²

P balkoni = 9,10 m²